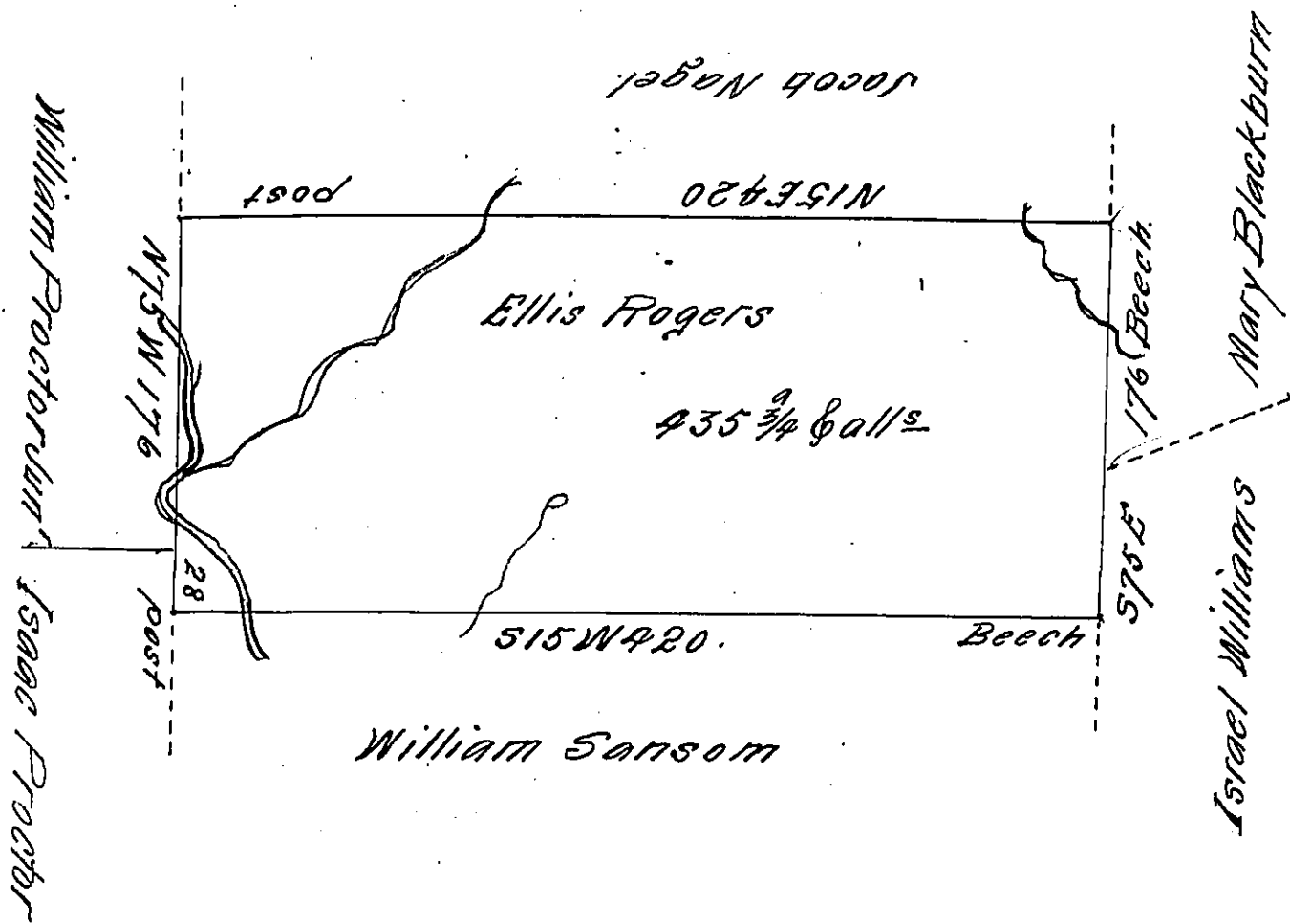


O. 164-101



Situated on the North Fork of Paint Creek and Kickey's Ridge in Quemahoning Township in Bedford County And Surveyed the 25<sup>th</sup> of June 1794 In pursuance of a Warrant dated the 16<sup>th</sup> day of June 1794.

Daniel Brodhead Esq<sup>r</sup>  
Surveyor General

George Woods Jun<sup>r</sup> D.S.

IN TESTIMONY that the above is a copy of the original remaining on file in the Department of Internal Affairs of Pennsylvania, made conformably to an Act of Assembly approved the 16th day of February, 1833, I have hereunto set my Hand and caused the Seal of said Department to be affixed at Harrisburg, this Second day of November 1911

*Henry Honck*  
Secretary of Internal Affairs.